



IBEX5 TRANSEAT USER GUIDE



EVAC+CHAIR®
The World's No.1 Stairway Evacuation Chair



IBEX5 TRANSEAT

www.evachelp.net/lbex5

The Evac+Chair IBEX 5 Transeat safely descends and ascends stairs without carrying or heavy lifting and is suitable for spiral stairs and where space is restricted.



Dimensions
Folded (mm)
H1140 x W400
x D360
Weight (unladen)
14.5kg

FEATURES

- 1 Telescopic extendable handle**
For comfortable and safe operator positioning for different passenger sizes
- 2 Detachable seat and backrest**
Easy to clean and simple to replace
- 3 Adjustable patient straps**
For increased passenger safety
- 4 Adjustable brake**
For controlled descent
- 5 Stainless steel frame construction**
Strong and robust for continued use
- 6 Front guide handles**
For more controlled ascent and descent

INCLUDES

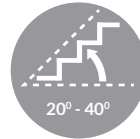
- Patient Restraints
- Photo luminescent Signage
- Wall Mounted Hooks
- Dust Cover
- User Guide



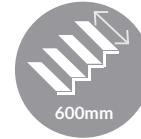
CHAIR PAYLOAD



STAIR TYPE



STAIR ANGLE



MINIMUM STAIR WIDTH



DESCENT/ASCENT



SERVICING



TRAINING



ADVISORY

Recommendation

At Evac+Chair we recommend that training with the Ibex occurs regularly, ideally during fire drills. For guidelines or training, contact your dealer. We accept no liability for damage to stairs.

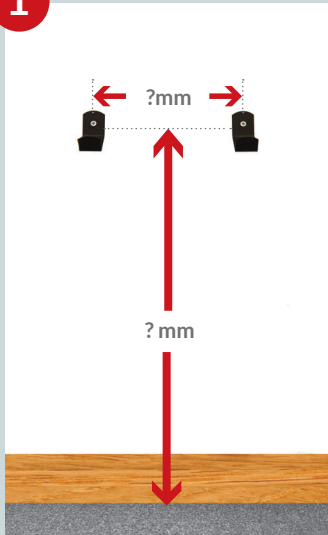




INSTALLATION

www.evachelp.net/lbex5/Installation

1



2

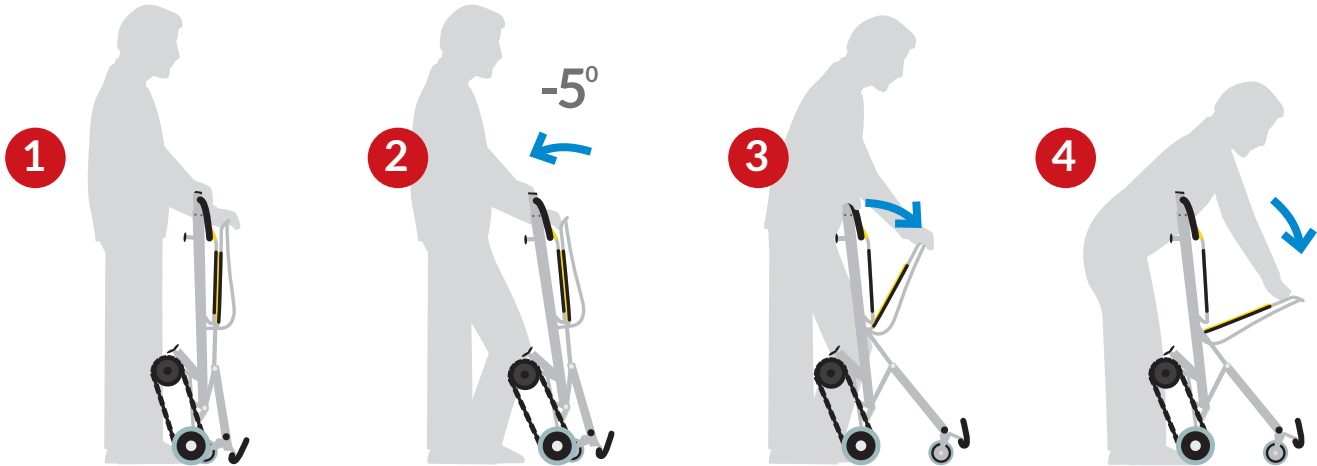


3



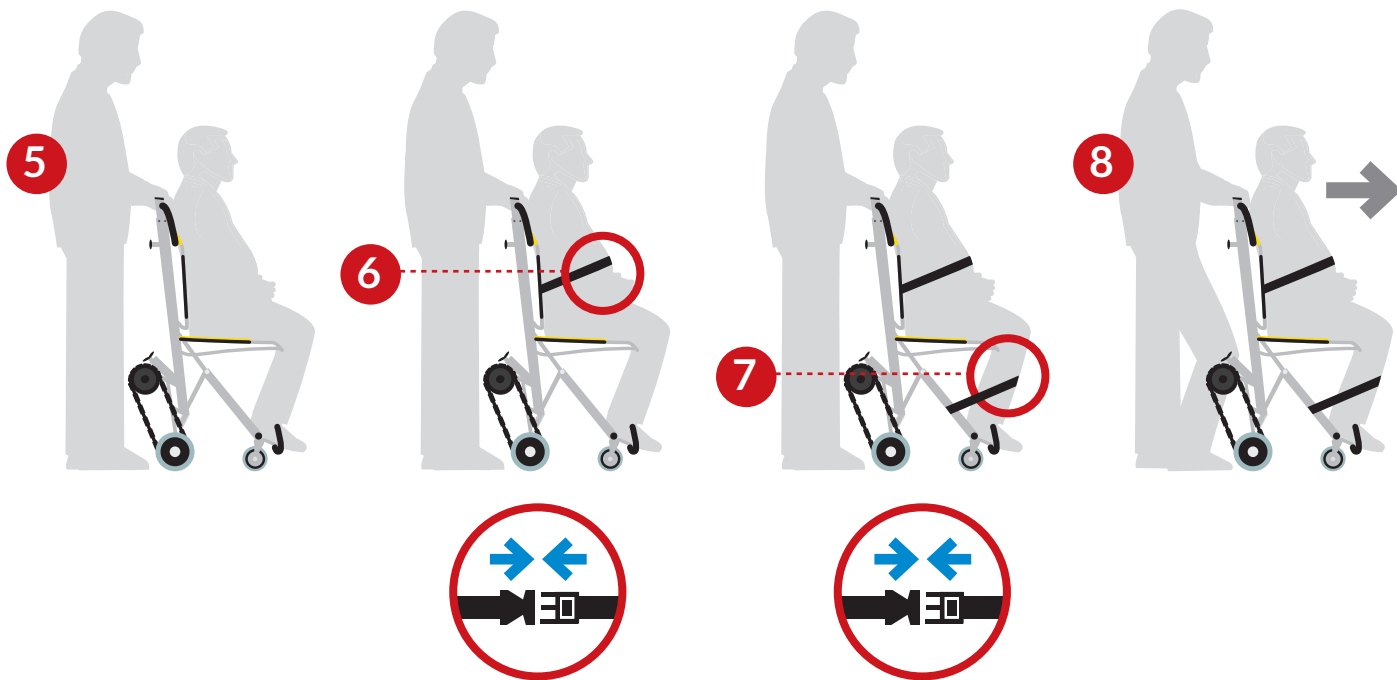
Call 0845 230 2253 to book our Installation Service

DEPLOYMENT

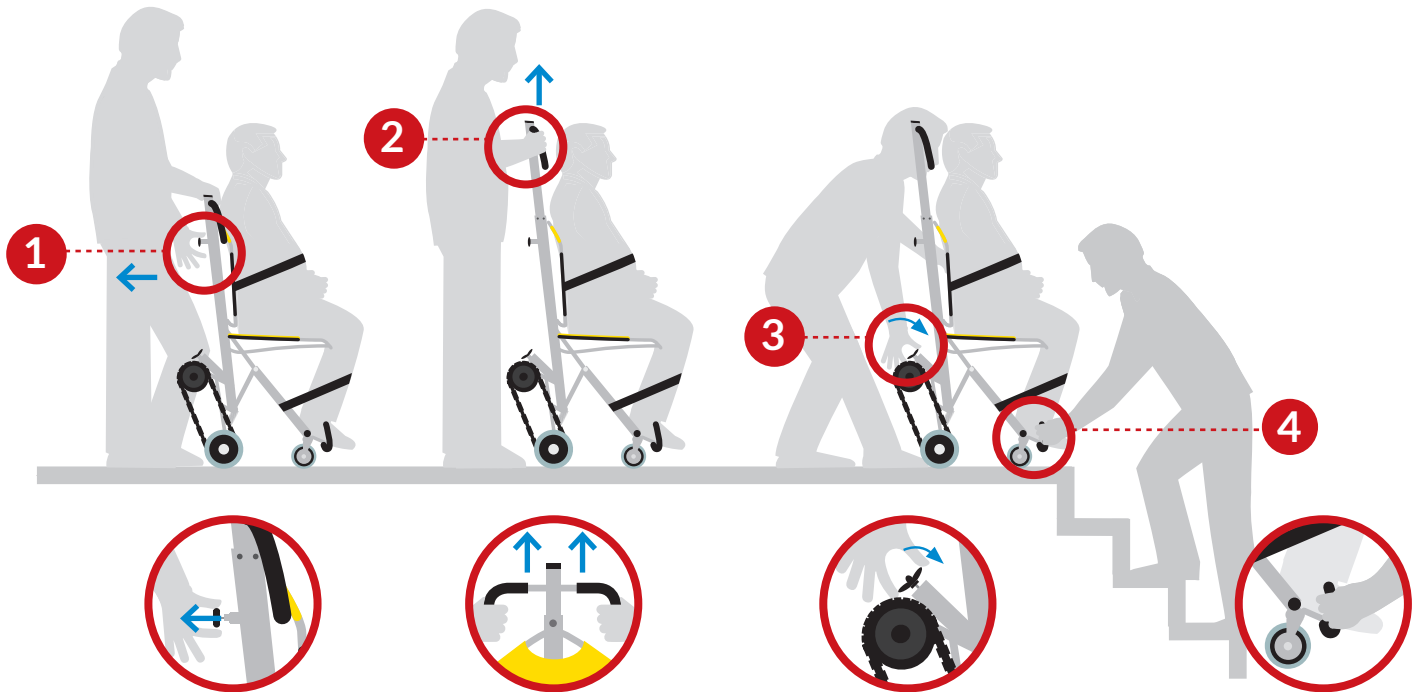


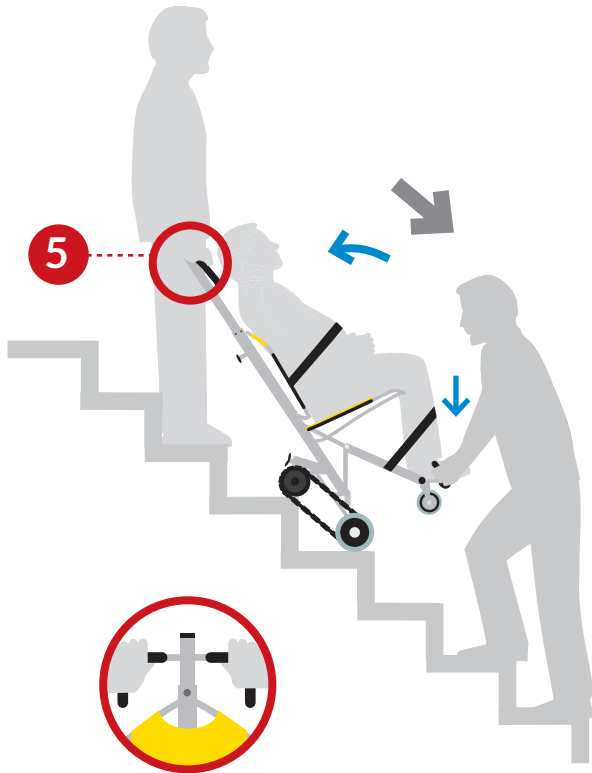
↔ TRANSFER

www.evachelp.net/lbex5

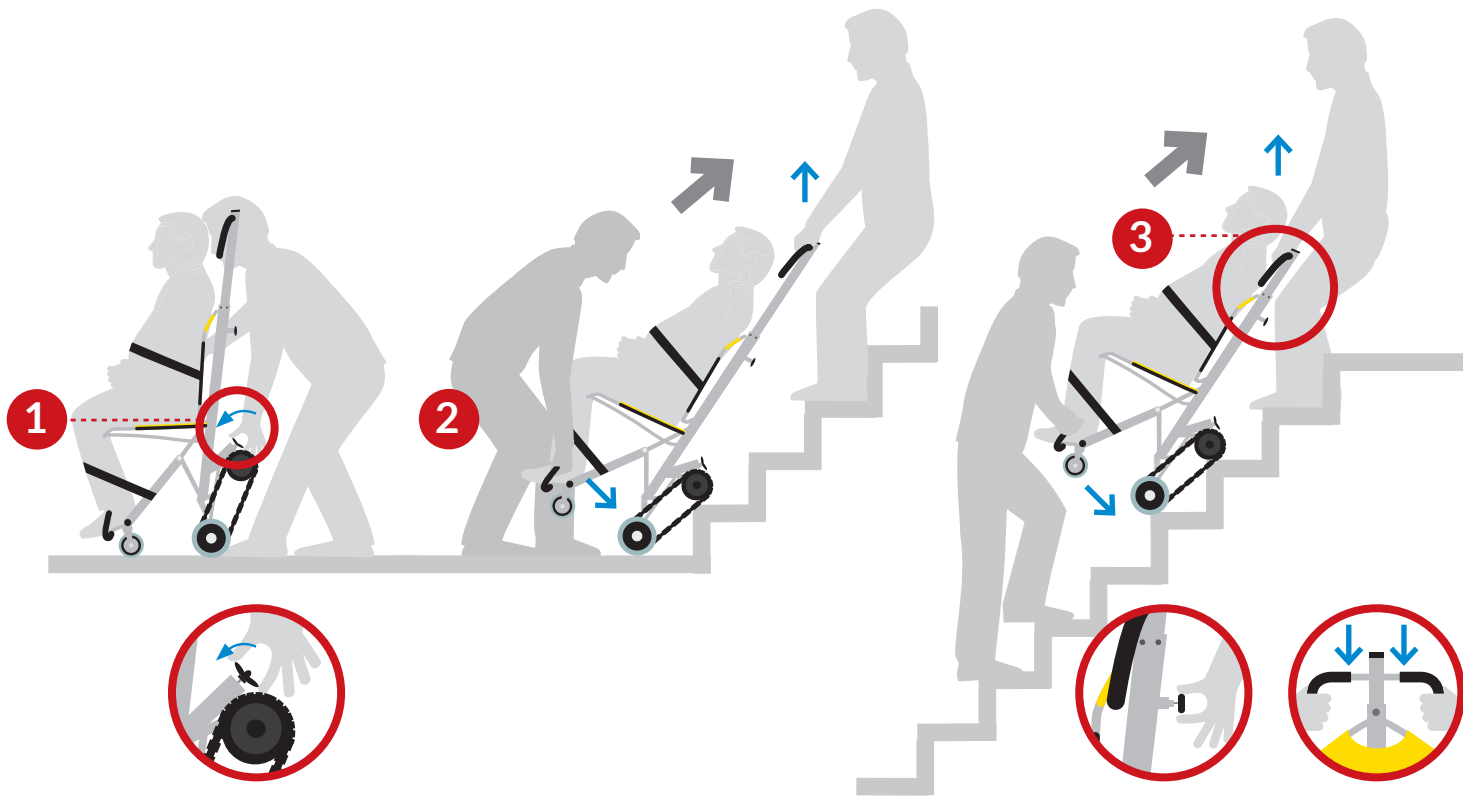


↓ DESCENT



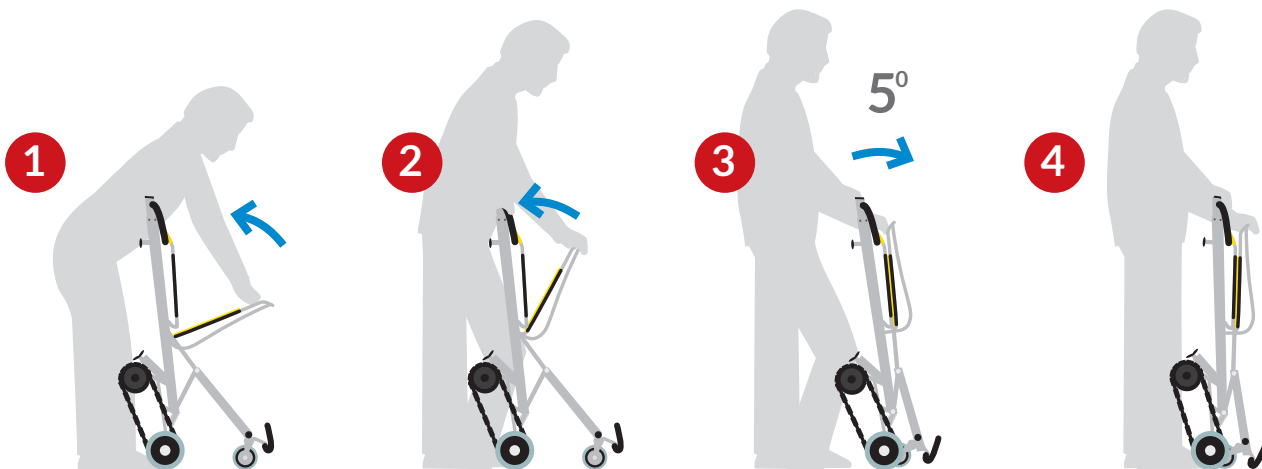


↑ ASCENT



CLOSING

www.evachelp.net/lbex5



EVAC+CHAIR FAQ's

How does the Evac+Chair work?

All our evacuation chairs work with friction track technology, which is the self-braking reinforced track which controls the speed of descent for easy single person operation.

Why do we supply different models?

We manufacture a wide range of evacuation chairs for every emergency evacuation scenario. Evac+Chair not only covers non-domestic, commercial and public premises, it also extends to the Air+Chair, specifically designed for on-board transit of mobility-restricted passengers travelling by air, sea and rail. All Evac+Chairs are designed to accommodate the passenger and handler.

Why do I need a site survey?

With at least eight different models of evacuation chair within our range, to suit different building environments, it's important to have a site survey to ensure you are purchasing the correct model for your requirements. For example, we will take measurements of the stair angle to make sure the correct friction tracks it fitted on your evacuation chair.

Do you need training for the Evac+Chair?

Although all of our evacuation chairs are easy to use, when it comes to an emergency situation, we firmly believe that training can further enhance how effective your emergency equipment can be. It is your legal obligation to keep up to date with new regulations, with adequately trained staff in EEmergency Escape Procedure for all, including the mobility impaired.

Do our Evac+Chairs go up stairs?

Yes IBEX5 Transeat and the 600H evacuation chair are able to ascend as well as descend a staircase. The IBEX5 Transeat uses traction belts that stay in connection with the stair nosing, where the 600H incorporates two retractable carrying handles to help assist with the ascent. These both require a minimum of two person operation.

How many people does it take to operate?

Our most frequently purchased chair for descent evacuation only, the 300H Evac+Chair only requires one person operation. However, depending on the Evac+Chair model, staircase structure and the circumstance of the evacuation, additional operators can be involved to assist, but this is down to the decision of the operators.

Can the Evac+Chair be used in a domestic premises?

Our evacuation chairs can be used in domestic premises, but it is not recommended for daily use as they are designed for emergency purposes only.

Why do we need a service/maintenance contract?

Our evacuation chairs actually fall under the Class 1 Medical Device Directive licensed by the Medical Health Regulatory Authority (MHRA). The Class 1 Medical Directive states that equipment should be serviced approx. every 6 months, however, we, as the manufacturer, recommend every 12 months and this is accepted by the directive. This is a physical check, not just visual. These are stipulations and requirements, however, these need to be incorporated into your own risk assessments.

SERVICING

Have you signed up to our Annual Service Contract?

Regular servicing will guarantee the lifetime of your IBEX5 Transeat. Our **Annual Service Contract** will ensure your products are fully operational, meet legal obligations and are ready for emergencies.

As a Class 1 Medical Device, IBEX5 Transeat should be regularly serviced and maintained to ensure its safe operation. This requirement is included within the PUWER Regulation. (Provision and Use of Works Equipment Regulations 1998). Our Annual Service Contract includes:



- 15 Point visual inspection
- Renewal of any wearing parts
- Testing
- Recording & reporting
- Engineer callout facility



TRAINING

Will you have enough trained staff in an emergency?

In an emergency situation, proper training will greatly enhance the effectiveness of IBEX5 Transeat. We offer two training courses:

Operator Training

A 2.5 hour in-house course that provides training for up to 4 members of staff in the safe use and operation of the IBEX5 Transeat.

Key Trainer Masterclass

A one day in-house course for 4 members of staff that “trains the trainers” enabling successful trainees to undertake in-house training.

- Trained operators will inspire others
- Key Training provides in-house trainers
- Training ensures legal obligations are met
- Training keeps you up to date with legislation

INSTALLATION

We can install your IBEX5 Transeat and provide expert advice and guidance on the most effective locations within your building.

Call 0845 230 2253 to book our Installation Service

EVAC+CHAIR®

The World's No.1 Stairway Evacuation Chair

ParAid House Weston Lane
Birmingham B11 3RS
United Kingdom

+44 (0)845 230 2253
enquiry@evacchair.co.uk
www.evacchair.co.uk



A division of

EVAC+CHAIR®
INTERNATIONAL

Manufacturing life safety products

CE Evac+Chair is a class 1 medical
device (non-invasive) 93/42/EEC

